



RED CLIFF BAND

of Lake Superior Chippewa



Miisaninawiind: Abitaaniibini-giizis: July 27-Aug 2, 2020

Resources

Heritage and Culture

Directory

Tourism

Job Opportunities

Divisions

Boozhoo and welcome to the Miisaninawiind weekly newsletter!

The Miisaniinawind brings you important news, announcements and updates, designed specifically for the Red Cliff community. But that's not all. The weekly eNewsletter will also provide news about neighboring tribes, communities and broader issues across Indian Country that matter to you.

If you have photos, news or information you'd like to share, please email submissions to communications@redcliff-nsn.gov.

Check our Facebook page [HERE](#) and our website [HERE](#). We are working on a new website and can't wait to share it with you!

Want to receive the newsletter each week? Sign up [HERE](#).

[Click HERE to view this email as a webpage instead.](#)

Red Cliff News & Updates

COVID-19 Community Updates

Various Tribal programs, services, and events have been canceled or temporarily suspended in our efforts to limit the spread of COVID-19.

An up-to-date list can be found on the Tribal Facebook page, and is updated continuously throughout each day.

You can also find a series of video updates from the Red Cliff Health Division on the Tribal Facebook page.

Legendary Waters Enters Phase 4 of Reopening August 2

Limited hotel rooms to open, pool remains closed

On August 2, 2020 Legendary Waters Resort and Casino will enter Phase 4 of its reopening plan and will accept hotel reservations on a limited basis. The 2nd and 3rd floors will open, and rooms will be alternated to allow for sufficient cleaning time between guests. Conjoining rooms will not be available, and the pool will remain closed.

Safety guidelines and social distancing protocol from previous reopening phases will remain in effect. Masks continue to be mandatory, and no smoking will be allowed indoors. Patrons are asked to enter through the main casino entrance for a brief non-invasive temperature check and hand sanitizer stations.

The Snack Bar will continue to offer take-out service, and the Outdoor Patio Bar along with the Gift Shop will be open with altered hours.

For hotel reservations please contact Legendary Waters Resort & Casino at 800-226-8478 or visit www.legendarywaters.com for more information.

Legendary Waters
RESORT & CASINO



FOOD BOXES

Thursday, July 30, 2020

Approx. 9am maybe later based on unloading the truck

Red Cliff Community Health Center Parking lot

36745 Aiken Rd Bayfield, WI

Please stay in your vehicle!

4 items per household

2 different produce boxes

Dairy box

2 different Chicken boxes

2 different Pork Boxes

Sassy Cow 2% half gallon milk

Sargento Mild Cheddar Cheese Sticks

Klondike Greek yogurt

OPEN TO EVERYONE!

Brought to you by Red Cliff Food Distribution and the
Hunger Relief Federation

For more info call Food Distribution 715-779-3740

For delivery options call

Marion Claremboux 715-779-3706 ext. 5010

Cut-off time to call for deliveries is

Wednesday July 29th @ 3pm!

2020 Census Calling All Tribal Members to Respond

If you haven't responded to the
2020 Census, please do so! It
only takes a couple minutes and
is vital for Red Cliff and Indian
Country!

The 2020 Census can be taken
online at www.2020census.gov

or by calling 844-330-2020.



I pledge
— TO COMPLETE —
the census to shape
the future of
my community

Responses to the 2020 Census will shape how hundreds of billions of dollars in federal funding are distributed to local communities annually.

[#shapeyourfuture](#)



Volunteers in Mission-Ministry Group

HAS BEEN CANCELLED
FOR THIS YEAR

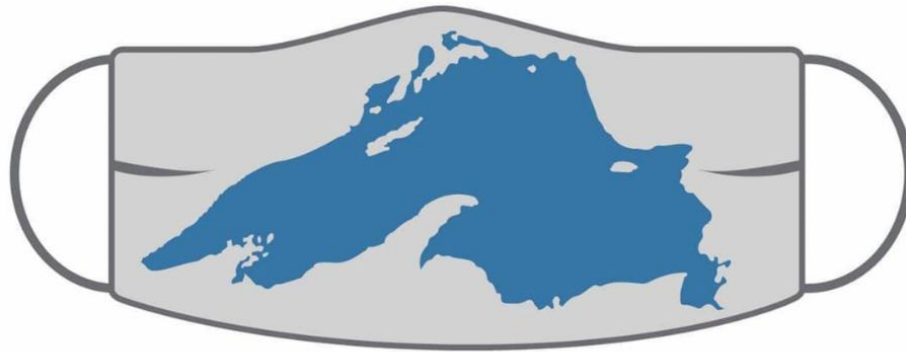
We will get out the info for next
year as soon as we have it.



2020

**Local Businesses and Tribal Government
Buildings Require Masks for Entry**

LOVE RED CLIFF?



Wear a mask!

My mask protects you. Your mask protects me.

This business supports the health and welfare of the Red Cliff community by **REQUIRING MASKS INSIDE**. Thank you for your support!

Red Cliff Community Needs Assessment

Help us better understand how the COVID-19 pandemic has affected you.

Take the 5-minute survey here:

<https://www.surveymonkey.com/r/redcliffcovid19>



Scan the QR code with your phone's camera to go directly to the online survey.

Call 715-779-3707 ext. 2319 to take the survey over the phone.

Questions? Contact planning@redcliff-nsn.gov.

From the Tales of Laughing Fox

By Polecat Productions

"Maiingan Ikwe"



Wolf Woman is a song, a story, a salve. It is past pain, current healing; it is reflection. And while this original work has much to offer its creator, Micheal Laughing Fox Charette, he never plays it on the full moon. "I'm afraid the Wolf Woman might answer back", Laughing Fox has often quipped. But he is only ever half-joking. Because, like all good stories, there's a light side and a dark side to this tale.

Wolf Woman tells of a time when Laughing Fox was a young man. He was feeling lost, as young men often are—looking for identity in the women he loved, and trying to mold himself to what others asked of him. One day he met a Wolf Woman and they began a fiery relationship. Laughing Fox was quick to bend himself to what he thought she wanted. But as time went on, he became less and less recognizable to himself. He acted out, as people often do when they feel lost—and one night, in a swirl of emotions, he smashed his beloved flute.

It was a time of darkness. Laughing Flute had ended things with his girlfriend and his daughter was moving far away. Now there was no one to mold himself around. He was forced to face himself. Who was he? What kind of man did he want to become? He missed his daughter so much he felt a giant hole in his heart. He didn't know what to do so he picked up a new flute and he began to play....

Laughing Fox played the notes of the Wolf Woman song, but he still felt so stuck: stuck in his life, his job, stuck, stuck stuck. That's when he stopped. He slowed down. He switched his hands around on the flute and he played the notes backwards. His breath moved in time with the song, he began to resonate with this melody he'd never heard before. In this moment he found strength; he found medicine.

Now the Wolf Woman song contains multitudes— moments of a time long ago, of loss, of

healing, of the power of creativity and flow and facing oneself and getting unstuck. Wolf Woman reminds us that it is never too late to look at things with fresh eyes, to slow down, and to choose a new path.

Michael Laughing Fox Charette is a musician, storyteller, artist, and educator from the Red Cliff band of Ojibwe in Northern Wisconsin. He and the Little Turtle Singers are recording stories, drums, and flute music from their life and tribe to offer as an education tool and a way to preserve and share culture for generations to come.

[Click here to help Laughing Fox record Ojibwe music and stories.](#)

Healing Circle Run 2020

A
virtual
walk/run
event

For
solidarity,
peace, unity,
and healing



Healing begins with the individual.

As a person heals,
they can help their family to heal.

As families heal,
they can help their communities to heal.

As communities heal,
they can help their nations to heal.

As individuals, families,
Communities, and nations heal,
they can help

Aki and our plant and animal relatives to heal



August 1-7, 2020

*To Do:
Sign up!*

Register at:

data.glifwc.org/hcr



YOUTH CLASS!



Youth CPR/AED/First Aid Training

Supported by a Grant from

OPEN TO AGES 12-17 - \$25



**Adult and Pediatric
CPR/AED/First Aid class
Tuesdays & Thursdays 1-2:30pm
July 14, 16, 21, 23, 28, 30
Bayfield Pavilion
Contact Us for info
About Need-Based
Financial Assistance.**

For the first time ever we are gearing a course just for youth ages 12- 17! This course will develop valuable skills to build self-confidence and help better prepare for emergencies while babysitting or at home. The Adult and Pediatric First Aid/CPR/AED course incorporates the latest science and teaches students to recognize and care for a variety of first aid emergencies such as burns, cuts, scrapes, sudden illnesses, head, neck, back injuries, heat and cold emergencies and how to respond to breathing and cardiac emergencies to help victims of any age - adults (about 12 years and older) and children (up to 12 years of age). Students who successfully complete this course will receive a certificate for Adult and Pediatric First Aid/CPR/AED valid for two years.

REGISTER ONLINE OR CALL TO RESERVE A SPOT!

Made with PosterMyW

WWW.RECREATIONANDFITNESSRESOURCES.ORG 715-779-5408

GLIFWC Job Opening Outreach Coordinator

This is a 1-year full time position that may be renewed with continued funding through the Great Lakes Indian Fish and Wildlife Commission's (GLIFWC's) Great Lakes Restoration Initiative grants.

GLIFWC is located on the Bad River Indian Reservation in Odanah, Wisconsin.

Under the direction of the Director of the Public Information Office, the Wildlife Section Leader, the Environmental Biologist and the Great Lakes Program Coordinator and the supervision of the Great Lakes Program Coordinator, the Outreach Coordinator will perform duties in a manner

consistent with Commission policies and procedures.

Compensation is set between \$32,805 - \$36,564. Applications are due by August 7, 2020.

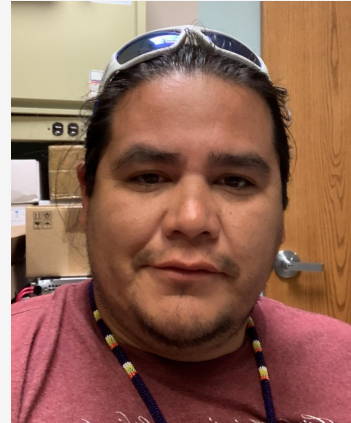
Click [HERE](#) to learn more about the position and for details on how to apply.

DePerry Hired as Wiring Technician

Boozhoo, my name is Nick DePerry and I have been recently hired as a wiring technician for the tribe.

I am also currently enrolled in LCOOC pursuing my degree in Native American Studies.

I am happily married to my wife Amaris Andrews-DePerry and together we are raising our 8 children together. Miigwech!



Health & Wellness

Behavioral Health July Newsletter

The Behavioral Health Department has released its July Newsletter.

Click [HERE](#) to view the full newsletter!



Behavioral Health Department

MH & AODA Outpatient • CCS • CST • TOR • RCTREE •
Native Connections • Noojimo'ewewin • MWC

July 2020 NEWSLETTER

Featured Articles/Program Updates	
Welcome	1
RCCHC Website.....	1
Native Connections Program	
Highlight	2
Mental Health & AODA	
Outpatient Program	3
CCS	4
RCTREE Program-	4
Nooji News.....	5

Boozhoo from the Red Cliff Community Health Center's Behavioral Health team!

We are excited to bring you news that you may find helpful. We hope to be able to provide information that you can use or share with others if you feel you are currently experiencing hard times, feeling down, or may not feel like you have anywhere to go.

Please use this newsletter as a resource for you to know you are NOT alone, and there are services that are here to help right in our own tribal community!

During the month of July we wanted the community to become more of the Native Connections program.

Check out the RCCHC Behavioral Health & Native Connections Website !

The updated Native Connections webpage <http://redcliffhealth.org/what-we-do/behavioral-health/native-connections/> at the Red Cliff Community Health Center website now contains expanded resources for youth and parents which can be helpful during this time of social distancing. More resources will be added to the webpage as time progresses.



Sun Mon Tue Wed Thu Fri Sat

Closed		Open 8 am-4:30pm	Open 8 am-4:30pm	Open 8 am-4:30pm	Open 8am-4:30pm	Open 8 am-4:30pm	Closed
AA = Alcoholics Anonymous Wellbriety = Native 12-step Recovery Meeting NA = Narcotics Anonymous Back to Basics of Recovery—AA 12 Steps Al-Anon—for people affected by AODA of others				1 Wellbriety online 6:00 pm	2 Closed for Staff Appreciation Holiday	3 Closed for 4th of July Holiday Observed	4 Happy July 4th
5 Closed	6	7 Al-Anon Online 6-7pm	8-10 Native Connections Virtual Language Camp			11 Closed	
12 Closed	13 Back to Basics of Recovery Online 3-4 pm	14 Al-Anon Online 6-7pm	15 Wellbriety online 6:00 pm	16 NA Online 10-11am	17 AA online 6:00 pm	18 Closed	
19 Closed	20 Back to Basics of Recovery Online 3-4 pm	21 Al-Anon Online 6-7pm	22 Wellbriety online 6:00 pm	23 NA Online 10-11am	24 AA online 6:00 pm	25 Closed	
26 Closed	27 Back to Basics of Recovery Online 3-4 pm	28 Al-Anon Online 6-7pm	29 Wellbriety online 6:00 pm	30 NA Online 10-11am	31 AA online 6:00 pm	Please see separate poster for online meeting links and passwords.	

Nooji Center Online Recovery Meetings

Monday-Nooji Back to Basics (of recovery) Group, 3:00PM

[CLICK HERE](#)

Meeting ID: 895 5518 5791 Password: 986872

By Phone: +1 312 626 6799 Meeting ID: 895 5518 5791 Password: 986872

Tuesday-Nooji Alanon Group, 6:00PM

[CLICK HERE](#)

Meeting ID: 854 2274 5354 Password: 454818

By Phone: +1 312 626 6799 Meeting ID: 854 2274 5354 Password: 454818

Wednesday-Nooji Wellbriety Group, 6:00PM

[CLICK HERE](#)

ID: 745 466 870 Password: nicetry

By Phone: +1 312 626 6799 Meeting ID: 745 466 870 Password: 456125

Thursday-Nooji Narcotics Anonymous, 10:00AM

[CLICK HERE](#)

Meeting ID: 889 5617 2863 Password: 031549

Friday-Nooji Alcoholics Anonymous, 6:00PM

[CLICK HERE](#)

Meeting ID: 326 283 9434 Password: REDCLIFF

By Phone: +1 312 626 6799 Meeting ID: 326 283 9434 Password: 836811

Benefits are available for those interested in purchasing food at local farmers' markets.

****Please note you must be a WIC participant to qualify.****

For more information contact Heidi Livingston at 715-779-3707 ext. 2261 or
Amaris Andrews-DePerry at 715-779-3707 ext. 2307



FARMERS' MARKET

LOCALLY GROWN



FARM FRESH

If you are interested in buying fresh fruits and
vegetables at your local farmers' market,
ask about receiving additional benefits.



State of Wisconsin
Department of Health Services
Division of Public Health
P-00255 (05/2016)

This institution is an equal opportunity provider



For other Health Center information or general questions call: 715-779-3707 or
Email RCHealthCenter@redcliffhealth.org

Click [HERE](#) to visit the Red Cliff Community Health Center website

Family & Human Services

Click [HERE](#) to receive the Zoom access link!



TO RECEIVE THE ZOOM LINK, SIGN UP HERE:

<https://forms.gle/E9JSZzASPG4VsrnP8>

VIRTUAL RED CLIFF- KOREAN EXCHANGE

IT WILL BE A GREAT TIME
TO RECONNECT, AND TO
HAVE FUN WITH ONLINE
GAMES AND ACTIVITIES!!

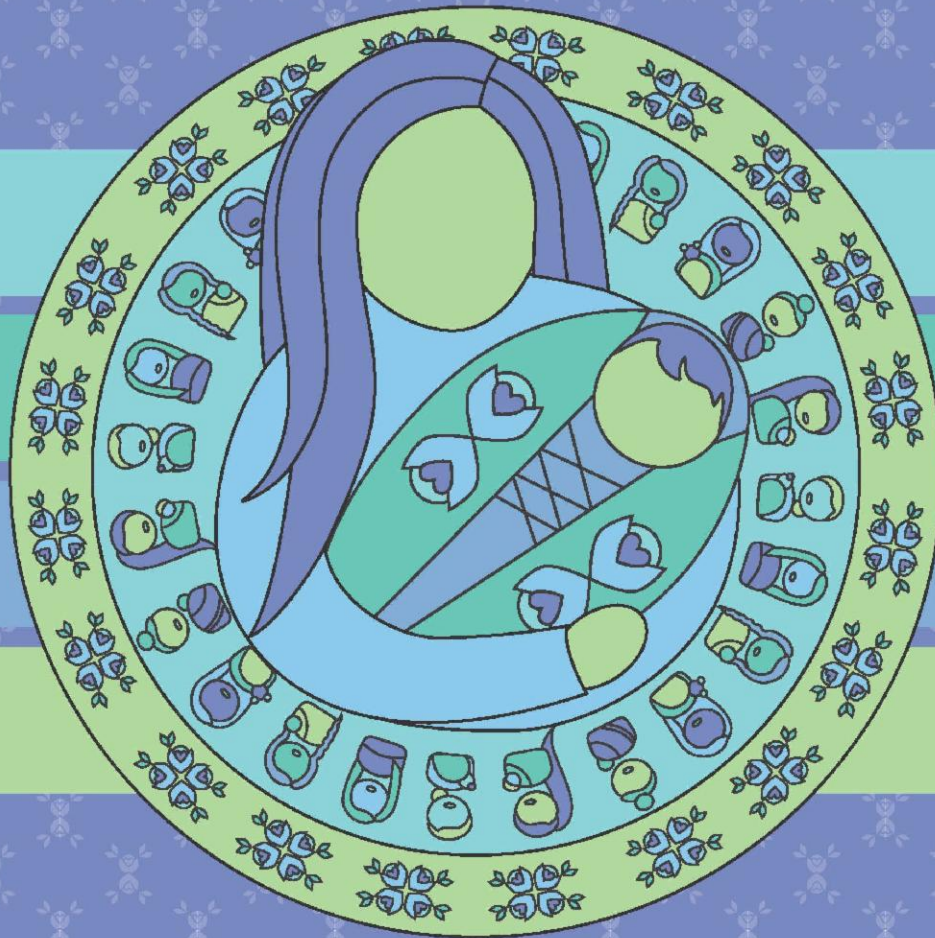
**7/28/20-7/30/20
7-9PM
ON ZOOM**



**LET US KNOW ANY
ACCESSIBILITY ASSISTANCE A
WEEK BEFORE THE EVENT.**

Healthy babies start with you!

You can help by telling your story.



WHAT IS PRAMS?

PRAMS stands for Pregnancy Risk Assessment Monitoring System. It is a confidential survey that collects information from women who have recently given birth.

The purpose of PRAMS is to improve the health of new mothers and their babies.

WHO RECEIVES THE SURVEY?

- Each month, the Department of Health Services sends the survey to about 200 women who recently gave birth, and who were chosen by chance.
- In 2020, we are surveying all Native moms who give birth in Wisconsin, in partnership with the Great Lakes Inter-Tribal Epidemiology Center.
- **Your voice is important to this effort.**
- If you are selected, the survey will be mailed to you and you will be asked to fill it out. All responses will be returned to the Department of Health Services and will be kept confidential, to the extent permitted by law.

WHO CAN I CALL IF I WANT MORE INFORMATION ABOUT THE PRAMS SURVEY?
If you would like to learn more about PRAMS, call the PRAMS team at 1-866-743-9737. The call is free. Our staff speaks English and Spanish. We are ready to help.

PRAMS IS A JOINT RESEARCH PROJECT BETWEEN THE WISCONSIN DEPARTMENT OF HEALTH SERVICES AND THE CENTERS FOR DISEASE CONTROL AND PREVENTION.

P02651A (03/2020)



Various Family and Human Services offerings have unique guidelines and hours in response to COVID-19.

See the Notices section toward the top of this newsletter for more information. You can also call the Family Human Services Division at 715-779-3706.

Education

Congratulations Class of 2020!

HONORING OUR 2020 RED CLIFF OUTREACH GRADUATES

Celebration Gathering
August 8th, 2020
The "Cabin" in Red Cliff
at 1:00pm



Shala Basina
Liberal Arts Associates



Clarissa Brossotto
Liberal Arts Associates
Certificate in Ojibwe Language



Nicholas DePerry
Certificate in Ojibwe Language



Barbara Lauren
Liberal Arts Associates

Please contact: Jim Pete or Magdalen Dale @ 715-779-3700 ask for the Cabin

lco.edu



HONOR YOUR PAST, STRENGTHEN YOUR FUTURE

Education Newsletter

The Division has released its July Newsletter.

Click [HERE](#) to view the full newsletter!

Aabita-Niibino-Giizis (Middle of the Year Moon)



Red Cliff Education Newsletter - July 2020



Head Start and Early Head Start Graduation Parade






Thursday July 10th, 2020



from 11-1 pm At the ECC

Sun Protection Tips



	<p>Wear a hat to help shield your face from sun—wearing protective clothing (light-weight clothing that covers exposed skin) is a great way to protect your skin from UV Rays.</p>
	<p>If you plan to go outside, liberally cover any exposed skin with SPF 35+. This will ensure that you are protected by 97% of the UV Rays. Apply every 2 hours—if in water, every 45 minutes!</p>
	<p>Your eyes are just as important and can be sunburnt. If you are at the beach, the water can reflect the sun more harshly. Please wear sunglasses when you are able!</p>

- Classroom Newsletters
- Games Ideas
- Play it Safe in the Sun
- Anishinaabemowin Commands
- Apply on line Head Start
- Word Search
- Scavenger Hunt
- Maze
- Job openings



Be a S.T.A.R.

Smile
Take a deep breath
And
Relax



The Red Cliff Early Childhood Center is accepting applications!

Head Start, Early Head Start and Home Based Services available.
Stop in and visit us anytime at 89830 Tiny Tot Road (Red Cliff)
to complete an application or
call 715-779-5030 for any questions.
Visit our website at www.redcliffecc.org

Always accepting
applications
at anytime.

*If you have a concern about your child's development or your child
has a special education/health need,
please contact us to learn about resources available for your child.*

Apply Online at www.redcliffecc.org

Head Start

Head Start is a center-based program for children ages 3-5. The classroom settings offer a preschool experience with a curriculum that is culturally based, using assessment-based child development outcomes.

- Kindergarten Readiness
- Transition
- Health & Nutrition Services
- Free Nutritious Meals
- Transportation
- Family Nights
- Weekly Pow-wow
- Ojibwe Language Learning
- Parent-teacher Conferences
- Local/Accredited Curriculums
- Monthly Parent/Policy Council Meetings
- 4K

Early Head Start

EHS center-based serves 32 children age 0-3. The primary emphasis of the program is to enhance infant and toddler growth through social, emotional, physical and cognitive development.

- School Readiness
- Transition
- Health & Nutrition Services
- Free Nutritious Meals
- Transportation
- Family Resource Services
- Family Nights
- Weekly Pow-wow
- Ojibwe Language Learning
- Parent-teacher Conferences
- Local/Accredited Curriculums
- Monthly Parent/Policy Council Meetings

Home Based

EHS home-based program serves pregnant women and children age 0-3. The programs primary emphasis is to enhance infant and toddler growth through social, emotional, physical and cognitive development.

- Weekly Home Visits
- Family Socializations
- Family Resource Services
- Health Service Coordination
- Transition Activities
- Family Nights
- Ojibwe Language Learning
- Monthly Parent/Policy Council Meetings
- Local/Accredited Curriculum

LCOOC CONTINUING EDUCATION

Intro to Cradle Board

Making (Doll Size)



Develop an understanding on how to make a traditional doll size cradle board.

Instructor:
Dr. James Pete

Contact: ext@lco.edu or
(715)634-4790 Ext. 121

Open to All Community Members

Dates: August 5, 6, 7

Time: 9am-2pm

Location: Red Cliff Outreach Site

Register at:

www.lco.edu/continuing-ed-training

or email ext@lco.edu

*Register by July 31



lco.edu    

#LCOcollege | #Community | #Extension

Isham-Chase Scholarship Announced at LCOOC

Lac Courte Oreilles Ojibwe College (LCOOC) is excited to announce the creation of the Isham-Chase Scholarship, a contribution from Mr. Mic Isham and Mrs. Monica Chase. The family has committed to \$8,000, supporting a \$1,000 scholarship each fall and spring semester over a course of four years.

"As the first person in my family to attend College

I credit LCOOC for most of the success that I've had, from my GED to supporting through completing my bachelors degree at Northland College, and setting my children on a path to success. The College is part of the solution to many issues that our community faces," shares Mic Isham, Executive Director of GLIFWC.



Increased scholarship offerings reduce the barriers of tuition and textbook costs for Lac Courte Oreilles Ojibwe College students. This reduction in barriers supports the College's mission to provide Anishinaabe communities with post-secondary and continuing education while advancing the language, culture, and history of the Ojibwe.

"The growth that LCOOC has had over the past two years – developing bachelors programs, launching a capital campaign, athletics, and more is a part of how we support student success in our community. My dad and I decided to collaborate our backgrounds and provide this scholarship to students who are interested in the natural resources or legal fields," Monica Chase, Attorney for LCO Child Support Services, and LCOOC Board of Regents Vice Chair said.

The scholarship application will be available on the college website, www.lco.edu/scholarships and open to Native American undergraduate students to apply. For further questions, call 715-634-4790 ext. 186 or email advancement@lco.edu.

About Lac Courte Oreilles Ojibwe College

The Lac Courte Oreilles Ojibwe College's mission is to provide Anishinaabe communities with post-secondary and continuing education while advancing the language, culture, and history of the Ojibwe.

Lac Courte Oreilles Ojibwe College (LCOOC) is a non-profit Ojibwe tribal college. Our focus is to help Native students advance themselves in the world, while studying their own history and language. We are an open-door institution which welcomes anyone who would like to work toward a better tomorrow. LCOOC does not discriminate based upon race and will not deny admission to any Native student regardless of tribal enrollment or affiliation.

Learn more at <http://lco.edu>

Boys and Girls Club of Gitchigami

Calling 2020 Club Graduates!!



BOYS & GIRLS CLUB
OF GITCHIGAMI

- Desiree Albertus
- Madosin Barningham
- Melissa Basina
- Leala Birkholz-LaPointe
- Talon Defoe
- Olivia Garramone

- Janelle Gordon
- Lizzy Hoopman
- Victoria Kahite
- Dillion Krisik
- Dusty LaFernier
- James LaGrew
- Joshuwa Lozano
- Dayton Washeleski-Gordon

**Your Graduation Gift
is IN!!**

July 20-24th, 2020
2pm-4pm each day
Family & Human
Services
Building

*Please practice social
distancing and mask wearing

If you see your name on this list
above, please stop in to pick up
your gift.

Any questions please contact Paige Moilanen at
paige.moilanen@redcliff-nsn.gov or at 715-209-6222

Click [HERE](#) to register for the Virtual Teen Summit!

Join us for the



November 2-4, 2020

Register at:

<https://na.eventscloud.com/ehome/index.php?eventid=553524&>

To Reserve Your

BE THERE SWAG!

Connect with peers, Dynamic Speakers, Team Activities,

prizes, fun, and a Virtual Dance Party!

#NativeClubsTeenSummit2020



GREAT FUTURES START HERE.



BOYS & GIRLS CLUBS
OF THE RED CLIFF BAND OF
LAKE SUPERIOR CHIPPEWA

Gitchigami

Treaty Natural Resources

Frog Bay Temporarily Closed Due To Storm

Check the Frog Bay Tribal National Park Facebook page for more up-to-date announcements.

CLOSED

Due to the storm over the weekend FBTNP is currently closed to all.

Sorry for the inconvenience, staff is working on getting the park back open ASAP



Soil and Woodchips

Available for the Community

Piles are located at Mino Bimaadiziiwin Farm
(farm is next to the Health Clinic)

To pick up:

- Stop by on a weekday between 2:00 PM and 4:00 PM
- Please provide your own truck, trailer, or buckets.
- If you would like assistance loading your vehicle, please call ahead to schedule a time (715) 779 3782. **Masks required.**

Take what you need, available until gone!

**Please note—per Administration recommendations and to maintain social distancing in response to Covid-19, the Farm is not currently open to the public. We are open during these specific times for community members to pick up soil or woodchips but please respect our guidelines at this time and stick to the specified hours. Miigwech!*



Please call or email with any questions. (715) 779 3782 or allissa.stutte@redcliff-nsn.gov

TNR Summer Ganawenjigaade Newsletter

The Treaty Natural Resources Department has released its Summer 2020 Ganawenjigaade newsletter.

Click [HERE](#) to view!

Red Cliff Band of Lake Superior Chippewa
**Treaty Natural Resources
 Division Newsletter**

Volume 9, Issue 2, Summer 2020

Ganawenjigaade

*It is taken care of, protected . . .
 We take care of, protect, keep it.*



Anishinaabemowin.....	2
TNR Comprehensive Plan Update.....	3
Mino Bimaadiziwin Gitaganin Update.....	4-5
Spring Gardening Assistance Report Back.....	6
Construction at Mino Bimaadiziwin Gitaganin..	7
Red Cliff Fish Hatchery Update.....	8
Harmful Algal Blooms.....	9
Eagle Bay Stairs Repaired.....	10
Working Together with Amik.....	11
Studying Makwa Populations.....	12-13
A Harey Situation for Snowshoe Hares.....	14
Ma'iingan Monitoring Update.....	15-17
GI-Ganawemaanaan Nibi:	
We Are Protecting the Water	18-22
Impacts to Tribal Rights from Oil Pipelines.....	23-24
What Can and Can't Be Recycled.....	25-26
Red Cliff Transfer Station Reduced Hours.....	27
Attention Campers.....	28
When Burning is Allowed.....	29
July 4th Fireworks and Safe Disposal.....	30
Summer Word Search.....	31

ATTENTION PATRONS:



To ensure the public health and safety at the Red Cliff Transfer Station, please review the following:

- ♦ **ALL BAGS MUST BE TAGGED.** Tags can be purchased at the Tribal Administration, Peterson's Store, and Buffalo Bay Gas Station.
- ♦ If you are able, please dispose of tagged bags directly into the compactor. See red arrow in photo.
- ♦ If you are unable to throw tagged bags, please leave your tagged bags by the compactor. See red box outlining drop off area in photo.



Please contact 715-779-3650 or 715-779-0171, if there are any questions.

Miigwech!

Red Cliff Environmental Department

Todd Mattson, Transfer Station Manager

Todd Mattson is the new Transfer Station Manager. Todd was born and raised in Northern Wisconsin. Todd has 13 years prior experience with a Housing Authority. He has a beautiful wife and step-daughter and resides in the Bay Area.

When not at work Todd enjoys hunting, fishing and being outdoors with his dog and family.

"I look forward to getting to know everyone! See you at the Transfer Station!"

Legendary Waters Resort & Casino



SNACK BAR

TAKE-OUT SPECIALS

(715) 779-9468
SUN-THU 11-9 FRI-SAT 11-10

Regular Snack Bar
Take-Out Menu
Available Also

MONDAY	TUESDAY	WEDNESDAY	THURSDAY	FRIDAY
July 27	July 28	July 29	July 30	July 31
Meat Loaf & Mashed Potatoes Veggies \$7.95 +Tax	10in Philly Quesadilla & Potato Wedges \$7.95 +Tax	Country Fried Steak & 2 Eggs Toast \$7.95 +Tax	Reuben & Fries \$7.95 +Tax	FRIDAY FISH FRY Whitefish w/French Fries Cole Slaw Tartar Sauce \$11.99 +Tax

Subject to change or cancellation. While supplies last. Management decisions final. 2020

News Across Indian Country

2020 Virtual Bayfield County Fair

The Bayfield County Fair has retooled and has started taking entries online. Wisconsin residents can enter up to twelve items accompanied by a photo and/or video that will be judged and awarded premiums.

There is no fee to enter the Fair this year. Entries can be submitted now until July 31st, either on the Fair website or using the ShoWorks Passport app (available for Android and iPhone). Judging will take place during the week leading up to the original Fair dates of August 6-9, 2020.

Once the items have been judged, they will be available to the public for display online. Ribbons will be sent to those requesting them and premiums will be awarded as usual.

The Bayfield County 4H Market Sale will also take place online when judging has been completed. More details to come on how to bid on Market Sale animals, but it will be using the same software.

For more information and a copy of our Premium List containing instructions, rules and information on how to enter, visit www.bayfieldcounty.org/2020fair. Contact the Bayfield County Fair office with any questions at (715) 373-3493 or thefair@bayfieldcounty.org.



Call for Exhibitors

2020 virtual fair

CULTURAL ARTS
HORSE JEWELRY
FLOWERS & HOUSEPLANTS
NATURAL SCIENCES
WOODWORKING
KNITTING & CROCHETING
BEEF HOME FURNISHINGS
AND MORE!

CERAMICS
BREADS
CLOTHING
SHEEP
PHOTOGRAPHY

ENTRY DEADLINE
MIDNIGHT
JULY 31, 2020



To enter visit:
bayfieldcounty.org/2020fair

PSC Extends Utility Disconnection Moratorium:

Customers who aren't able to pay utility bill won't be penalized

The Public Service Commission of Wisconsin (PSC) voted 2-1 to stay a portion of its June 26 order to extend the moratorium on utility residential customer disconnections and refusal of service for nonpayment until September 1. The additional time will allow PSC staff to collect more data and information from utilities on their disconnection plans, allow for comment from customer organizations, and monitor further the spread of COVID-19 in the state. The move comes as COVID-19 positive cases in Wisconsin have more than doubled since the PSC met in June to order the end of the moratorium.

"We continue to closely monitor COVID-19 and its impact on utility customers in Wisconsin. The data has shown that the coronavirus has ballooned since our discussion on June 11," said PSC Chairperson, Rebecca Cameron Valcq. "It is our obligation to strike a balance to ensure the financial health of utilities, but also ensure customer safeguards are in place. It is our role to provide clarity to utilities, but be nimble enough to press the pause button when it is in the public interest to do so. We must press the pause button today on utility disconnections as the risk to public health is far greater today than it was a month ago, while the financial impact to utilities has been minimal."

In light of the extension, the PSC is still strongly urging customers to seek a payment plan with their utility or apply for energy assistance to avoid a large debt and possible disconnection when the moratorium ends.

If customers are having difficulty paying their energy bills, they may be eligible for assistance from the Wisconsin Home Energy Assistance Program (WHEAP). To determine eligibility or find out where to apply for assistance, go to <http://homeenergyplus.wi.gov/> or call 1-866-HEATWIS.

If customers cannot reach an agreement with their utility, they are urged to contact the PSC by calling 1-800-225-7729, or by filing a complaint on the PSC website.

In June, the PSC voted to lift the temporary moratorium on utility disconnections for nonpayment that was put in place in March, during the COVID-19 public health emergency.

However, the PSC required that a utility postpone disconnection for 21 days where there is a positive COVID-19 test and up to an additional 21 days if the person is still under quarantine following the original postponement.

The PSC is continuing to monitor utilities' disconnection plans, payment plan terms, and customer notices to ensure they conform to existing orders, administrative codes, and state law. The Commissioners plan to meet on August 20 to discuss if further modifications or extensions should be provided beyond September 1.

For information on the PSC's previous actions regarding utility disconnections for COVID-19, click [here](#).

WI Task Force looks to expand internet access to rural Indigenous reservations

By Frank Vaisvilas
Green Bay Press-Gazette

RED CLIFF – A task force created by Gov. Tony Evers this month may help expand broadband access across the state, including on Native American rural reservations.

Much of the problem in getting high-speed internet access to rural communities lies in the many miles of communications lines that would have to be installed.

Without government investment in that infrastructure, providing access would not be economically feasible for private companies, officials said.

“Having awareness of the problem is a first step,” said Theron Rutyna, IT director for the Red Cliff Band of Lake Superior Chippewa, who sits on the newly formed task force. “Now, that awareness is at the top of government, we should be able to do something about it.”

Satellite internet or cellphone mobile “hot spots” may be available for rural residents, but they don’t provide the speeds or allowable data amounts needed for extended periods of today’s online activities, such as video conferencing.

Sovereign tribal governments also have their own laws regarding permits, contracts and taxes, adding an administrative layer to installing broadband infrastructure on reservations.

“Getting to know all of that can be a significant obstacle for a broadband company,” Rutyna

said.

Not only do more people in Wisconsin face slower Internet speeds than the national average, but about a quarter of residents in rural areas also lack access to at least one broadband service, according to the Federal Communications Commission's 2020 Broadband Deployment Report.

The new task force will advise the governor and legislature on broadband policy and strategies for expanding high speed internet statewide.

"The COVID-19 pandemic has underscored that access to high-speed broadband is a necessity, not a luxury, and folks across our state have had to adapt from kids and educators shifting to virtual classrooms, workers having to work from home and even folks using telemedicine to visit with their doctor," Evers said in a press release. "This task force will bring together experts from across the state to research and recommend solution that state leaders can adopt to connect every person in Wisconsin."

The shortcomings were especially apparent this spring when students were learning at during the pandemic. Rutyna estimates that up to 60% of rural Indigenous students did not have access to adequate internet service to do their homework.

In the Lac du Flambeau Band of Chippewa reservation, Internet provider Frontier was the only company with consistent service. However, the company did not have enough accounts available to service every household on the reservation even if every family could afford it, according to Samantha Maki, director of education for the tribe.

And the company's bandwidth speed usually allowed for only one device to be streaming in a household at times on the Forest County Potawatomi Community reservation. That was a problem for families with multiple students, according to Thomas Boelter, director of education and culture for that tribe.

"Frontier would like to be able to provide higher speed broadband to all households, however upgrading broadband infrastructure in rural areas is economically challenging," said Javier Mendoza, vice president of corporate communications for Frontier.

Frontier is partnering with Connect America Fund, a federal effort to deliver internet access with download speeds of at least 10 Mbps to 76,000 Wisconsin households, including the tribal communities of Lac du Flambeau Band, Potawatomi and Ho Chunk Nation.

The company also is planning to utilize the fund to expand broadband service in 2020 to customers in the Sokaogon Chippewa Community, Menominee Indian Tribe and Stockbridge-Munsee Community Band of Mohican Indians.

"We will also continue to evaluate and execute strategies to improve our service and ensure our customers have access to reliable and affordable service," Mendoza said.

Rutyna is joined by 23 others on the task force, including representatives of AT&T, Charter Communications, TDS Telecommunications and several members of the state legislature.

The governor's budget earmarked \$48 million earlier this year for a two-year broadband expansion grant program.

Yet, it is unlikely that reservations will see any significant broadband infrastructure improvements this summer should e-learning have to continue into the fall, Rutyna said.

But the tribes are finding ways to prepare nonetheless.

An AT&T communications tower was installed last year on the Red Cliff reservation. Infrastructure enabling an increase in wireless internet to service much of the reservation might be able to be installed this summer, according to Rutyna.

The Potawatomi tribe had purchased some educational programs that could be downloaded so students could work on them offline when internet service slowed or was unavailable.

In addition, the Lac du Flambeau tribe is installing WiFi boosters in government buildings, so students can access the internet from the parking lots of those buildings.

The task force hopes to help meet the state's goal of providing affordable broadband access to all of Wisconsin's residents by 2025.

"We are hopeful that this task force will greatly benefit Wisconsin's Indian Country," said Red Cliff Vice Chairman Nathan Gordon.



Community Updates

Follow the link below to see announcements for upcoming events!

[View the announcements](#)

Red Cliff Tribal Administration Office
88455 Pike Road
Bayfield, Wi. 54814
715-779-3700
redcliff-nsn.gov

Contact Us



Share



Tweet